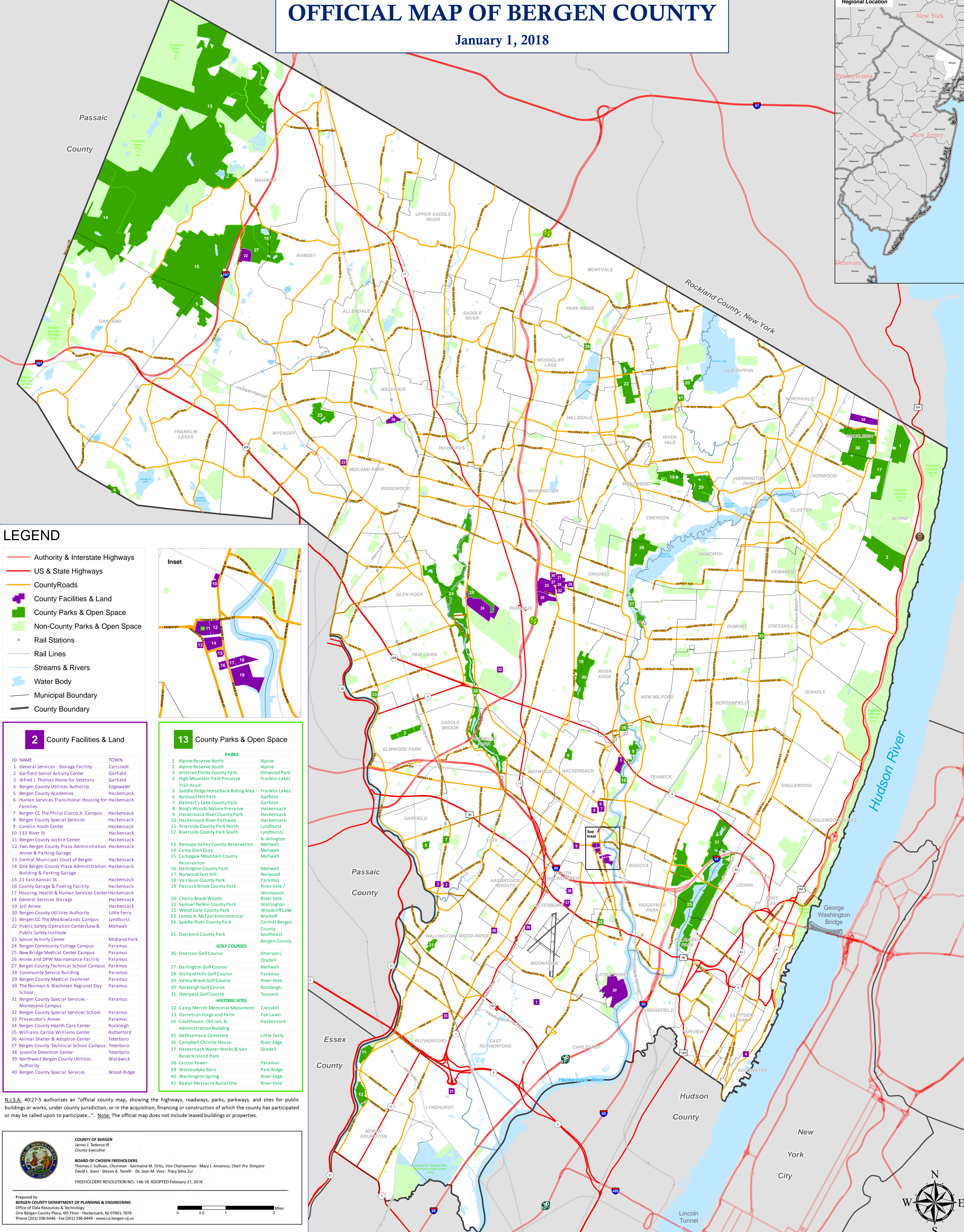
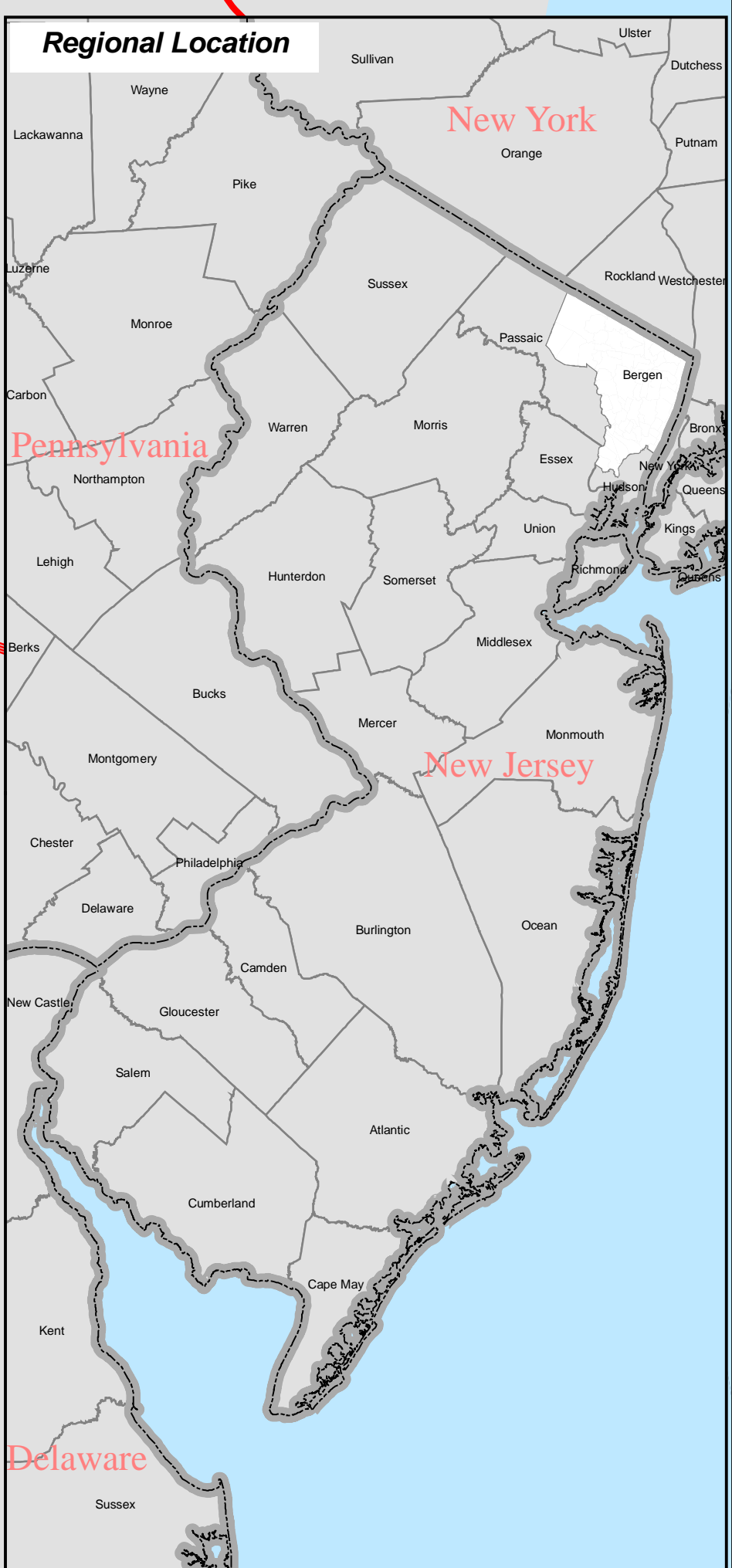


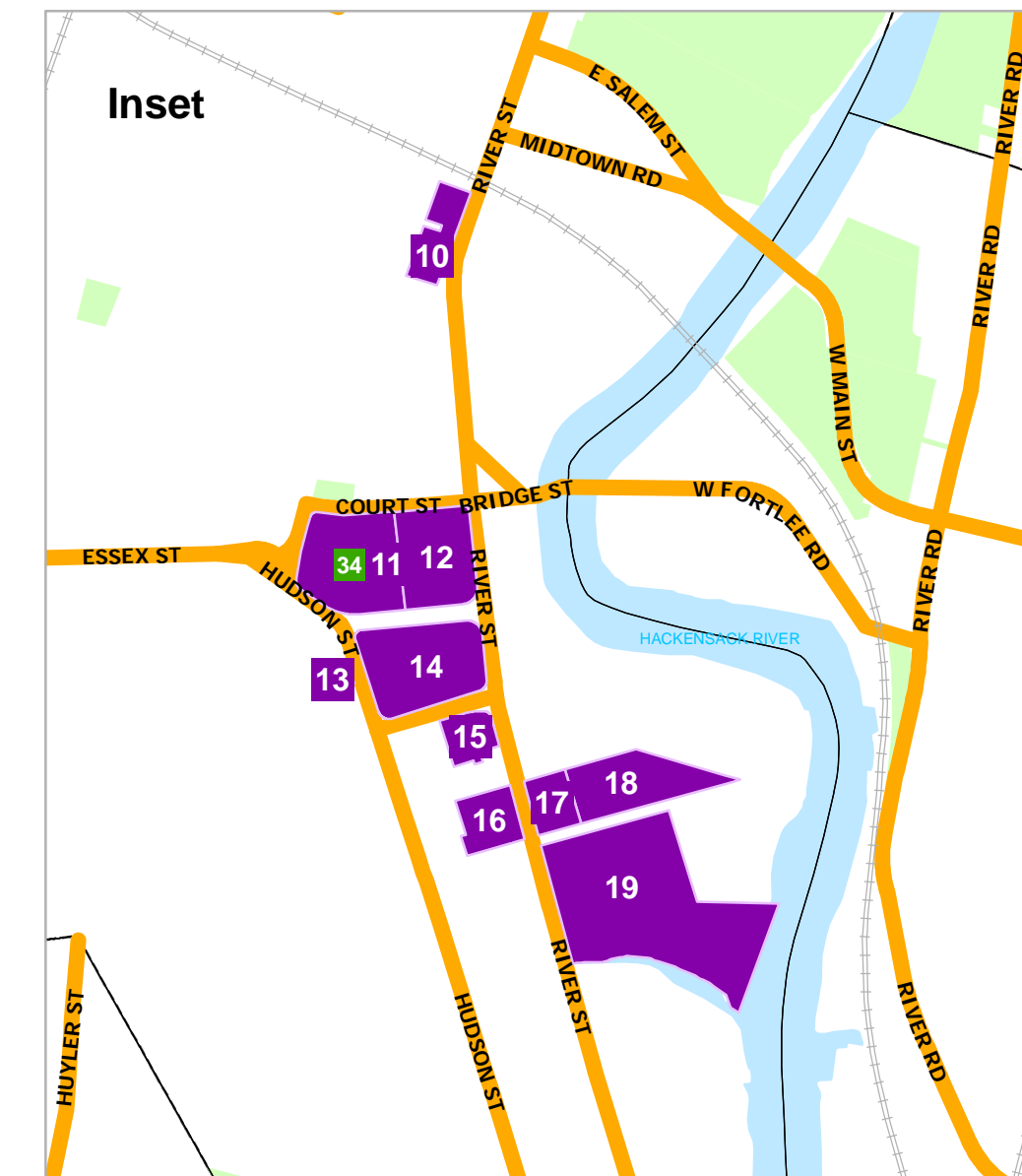
OFFICIAL MAP OF BERGEN COUNTY

January 1, 2018



LEGEND

- Authority & Interstate Highways
- US & State Highways
- County Roads
- County Facilities & Land
- County Parks & Open Space
- Non-County Parks & Open Space
- Rail Stations
- Rail Lines
- Streams & Rivers
- Water Body
- Municipal Boundary
- County Boundary



2 County Facilities & Land

| ID | NAME | TOWN |
|----|--|--------------|
| 1 | General Services - Storage Facility | Carlstadt |
| 2 | Garfield Senior Activity Center | Garfield |
| 3 | Alfred J. Thomas Home for Veterans | Garfield |
| 4 | Bergen County Utilities Authority | Edgewater |
| 5 | Bergen County Academics | Hackensack |
| 6 | Human Services Transitional Housing for Hackensack Families | Hackensack |
| 7 | Bergen CC The Phillip Clarco Jr. Campus | Hackensack |
| 8 | Bergen County Special Services | Hackensack |
| 9 | Conklin Youth Center | Hackensack |
| 10 | 133 River St | Hackensack |
| 11 | Bergen County Justice Center | Hackensack |
| 12 | Two Bergen County Plaza Administration Annex & Parking Garage | Hackensack |
| 13 | Central Municipal Court of Bergen | Hackensack |
| 14 | One Bergen County Plaza Administration Building & Parking Garage | Hackensack |
| 15 | 21 East Kansas St | Hackensack |
| 16 | County Garage & Fueling Facility | Hackensack |
| 17 | Housing, Health & Human Services Center | Hackensack |
| 18 | General Services Storage | Hackensack |
| 19 | Jail Annex | Hackensack |
| 20 | Bergen County Utilities Authority | Little Ferry |
| 21 | Bergen CC The Meadowlands Campus | Lyndhurst |
| 22 | Public Safety Operation Center/Law & Public Safety Institute | Mahwah |
| 23 | Senior Activity Center | Midland Park |
| 24 | Bergen Community College Campus | Paramus |
| 25 | New Bridge Medical Center Campus | Paramus |
| 26 | Annex and DPW Maintenance Facility | Paramus |
| 27 | Bergen County Technical School Campus | Paramus |
| 28 | Community Service Building | Paramus |
| 29 | Bergen County Medical Examiner | Paramus |
| 30 | The Norman A. Blesman Regional Day School | Paramus |
| 31 | Bergen County Special Services - Montezano Campus | Paramus |
| 32 | Bergen County Special Services School | Paramus |
| 33 | Prosecutor's Annex | Paramus |
| 34 | Bergen County Health Care Center | Rockleigh |
| 35 | Williams Carlos Williams Center | Rutherford |
| 36 | Animal Shelter & Adoption Center | Teterboro |
| 37 | Bergen County Technical School Campus | Teterboro |
| 38 | Juvenile Detention Center | Teterboro |
| 39 | Northwest Bergen County Utilities Authority | Waldwick |
| 40 | Bergen County Special Services | Wood-Ridge |

13 County Parks & Open Space

| PARKS | |
|----------------|--|
| 1 | Alpine Reserve North - Alpine |
| 2 | Alpine Reserve South - Alpine |
| 3 | Artesian Fields County Park - Elmwood Park |
| 4 | High Mountain Park Preserve - Franklin Lakes |
| 5 | Saddle Ridge Horseback Riding Area - Franklin Lakes |
| 6 | Belmont Hill Park - Garfield |
| 7 | Dahner's Lake County Park - Garfield |
| 8 | Borg's Woods Nature Preserve - Hackensack |
| 9 | Hackensack River County Park - Hackensack |
| 10 | Hackensack River Pathway - Hackensack |
| 11 | Riverside County Park North - Lyndhurst |
| 12 | Riverside County Park South - Lyndhurst |
| 13 | Ramapo Valley County Reservation - N. Arlington |
| 14 | Camp Glen Gray - Mahwah |
| 15 | Campgaw Mountain County Reservation - Mahwah |
| 16 | Darlington County Park - Mahwah |
| 17 | Norwood East Hill - Norwood |
| 18 | Van Saun County Park - Paramus |
| 19 | Pascack Brook County Park - River Vale / Westwood |
| 20 | Cherry Brook Woods - River Vale |
| 21 | Samuel Nelkin County Park - Wallington |
| 22 | Wood Dale County Park - Woodcliff Lake |
| 23 | James A. McFaul Environmental - Wyckoff |
| 24 | Saddle River County Park - Central Bergen |
| 25 | Overpeck County Park - South Hackensack |
| GOLF COURSES | |
| 26 | Emerson Golf Course - Emerson / Oradell |
| 27 | Darlington Golf Course - Mahwah |
| 28 | Orchard Hills Golf Course - Paramus |
| 29 | Valley Brook Golf Course - River Vale |
| 30 | Rockleigh Golf Course - Rockleigh |
| 31 | Overpeck Golf Course - Teaneck |
| HISTORIC SITES | |
| 32 | Camp Merritt Memorial Monument - Cresskill |
| 33 | Garretson Forge and Farm - Fair Lawn |
| 34 | Courthouse, Old Jail, & Administration Building - Hackensack |
| 35 | Gethsemane Cemetery - Little Ferry |
| 36 | Campbell Christie House - River Edge |
| 37 | Hackensack Water Works & Van Buskirk Island Park - Oradell |
| 38 | Easton Tower - Paramus |
| 39 | Wortendyke Barn - Park Ridge |
| 40 | Washington Spring - River Edge |
| 41 | Baylor Massacre Burial Site - River Vale |

N.J.S.A. 40:27-5 authorizes an "official county map, showing the highways, roadways, parks, parkways, and sites for public buildings or works, under county jurisdiction, or in the acquisition, financing or construction of which the county has participated or may be called upon to participate...". Note: The official map does not include leased buildings or properties.

COUNTY OF BERGEN
James S. Tedesco III
County Executive

BOARD OF CHOSEN FREEHOLDERS
Thomas J. Sullivan, Chairman - Germaine M. D'Arti, Vice Chairwoman - Mary J. Amoroso, Chair Pro Tempore
David L. Ganz - Steven A. Tanelli - Dr. Joan M. Voss - Tracy Silva Zur

FREEHOLDERS' RESOLUTION NO. 148-18 ADOPTED February 21, 2018

Prepared by:
BERGEN COUNTY DEPARTMENT OF PLANNING & ENGINEERING
Office of Data Resources & Technology
One Bergen County Plaza, 4th Floor - Hackensack, NJ 07601-7076
Phone (201) 336-6446 - Fax (201) 336-6449 - www.co.bergen.nj.us

