

# PASCACK BROOK COUNTY PARK INCLUSIVE PLAYGROUND

WESTWOOD, NEW JERSEY

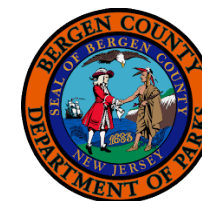


01.07.2025





# SITE ANALYSIS

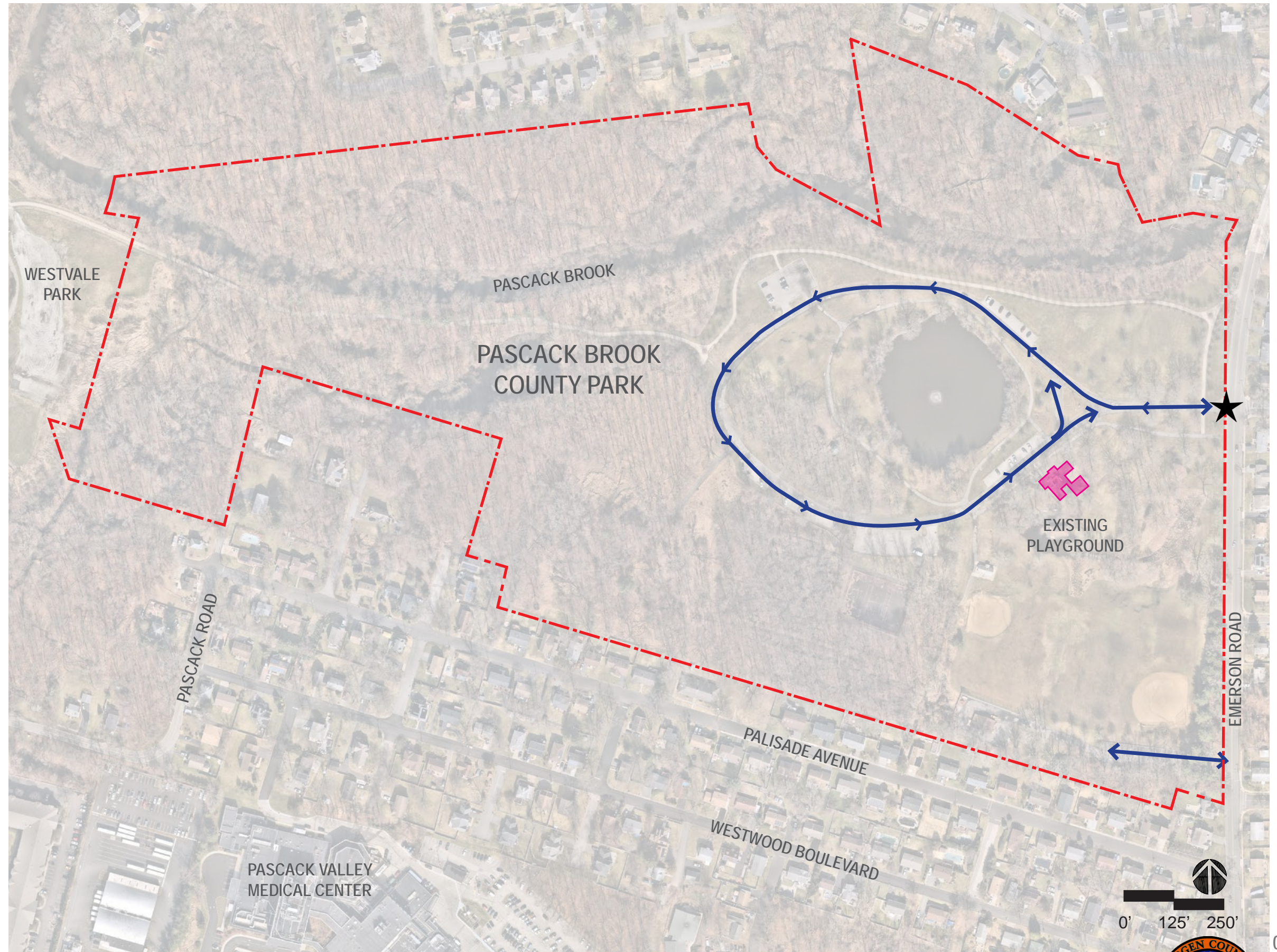




PARK CONTEXT ANALYSIS

LEGEND

- PROPERTY LINE
- PROJECT AREA
- ↔ PARK ROADWAY
- ★ MAIN PARK ENTRANCE



01.07.2025

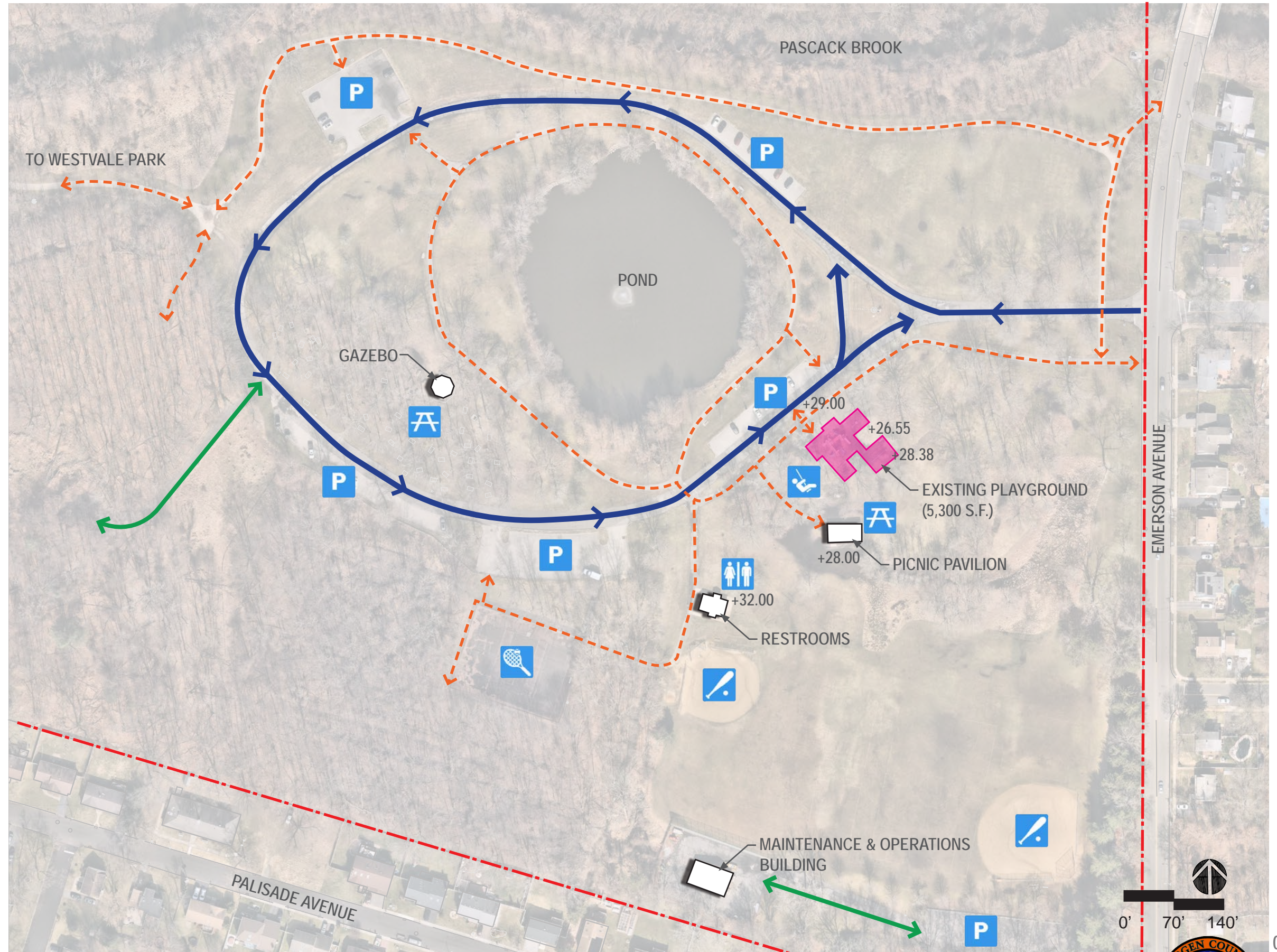




# SITE ANALYSIS

## LEGEND





- - - PROPERTY LINE
- PROJECT AREA
- ↔ PARK ROADWAY
- ↔ MAINTENANCE ACCESS
- - -> PEDESTRIAN PATH
- +XX.XX SPOT ELEVATION
- 🎒 PLAYGROUND
- P PARKING LOT
- ♿ PUBLIC RESTROOM
- A PICNIC AREA
- 🎾 TENNIS COURT
- ⚾ BALL FIELD





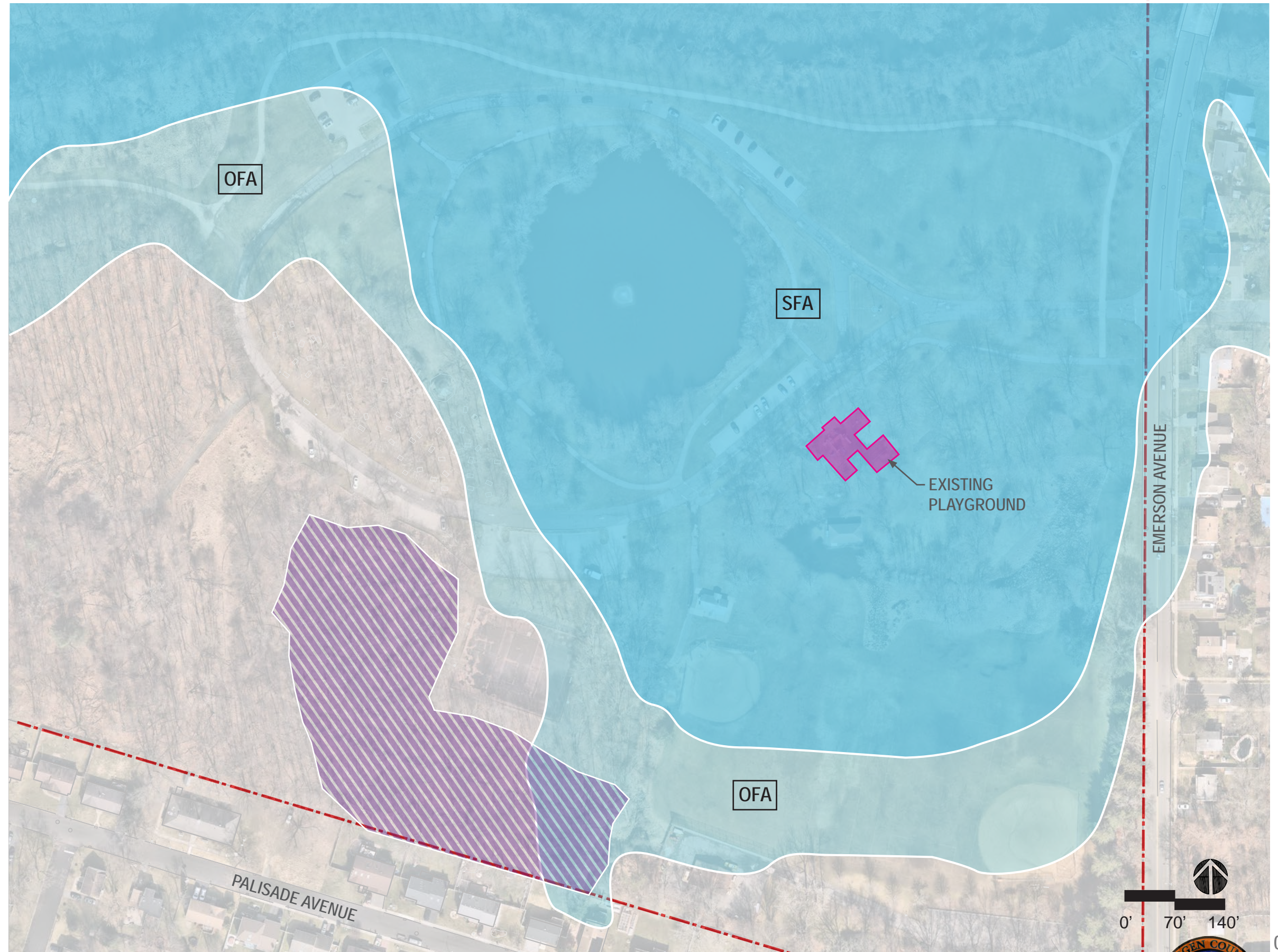
# SITE FLOOD AREA ANALYSIS

## LEGEND

-  PROJECT AREA
-  WETLAND AREA
-  SPECIAL FLOOD HAZARD AREAS (SFA) [1% ANNUAL CHANCE OF FLOOD / 100-YEAR FLOODPLAIN]
-  OTHER FLOOD AREAS (OFA) [0.2% ANNUAL CHANCE OF FLOOD / 500-YEAR FLOODPLAIN]

## SOURCE:

1. FEMA FLOOD INSURANCE RATE MAP
2. "WETLANDS L.O.I., TRANSITION AREA AVERAGING, G.P. NO. 17 & FLOOD HAZARD AREA PERMITTING PLAN" BY COSTA ENGINEERING (2010)





EXISTING CONDITIONS PHOTOS



1 PLAYGROUND



2 PARKING LOT ADJACENT TO POND



KEY MAP



3 PAVILION



4 RESTROOM

PLAYGROUND SIZE	5,300 S.F.
SWINGS	2 STRAPS, 2 BUCKETS
2-5 PLAY EQUIPMENT	YES
5-12 PLAY EQUIPMENT	YES
SENSORY PLAY EQUIPMENT	NO
PLAY EQUIPMENT CONDITION	MODERATE - POOR
SAFETY SURFACING	WOOD MULCH
PLAYGROUND ACCESS	LIMITED
ADA ACCESSIBLE PATH FROM PARKING	YES
SEATING	4 BENCHES
PAVILION W/ PICNIC TABLES	YES
DISTANCE TO RESTROOM	350 FT.
DISTANCE TO PAVILION	270 FT.
DISTANCE TO PARKING	70 FT.
NEARBY OUTDOOR RECREATION	SOFTBALL FIELD, BASEBALL FIELD, SOCCER FIELD, TENNIS COURTS
FLOOD CONDITION	FLOOD HAZARD AREA



# ACCESSIBLE VS. INCLUSIVE PLAY



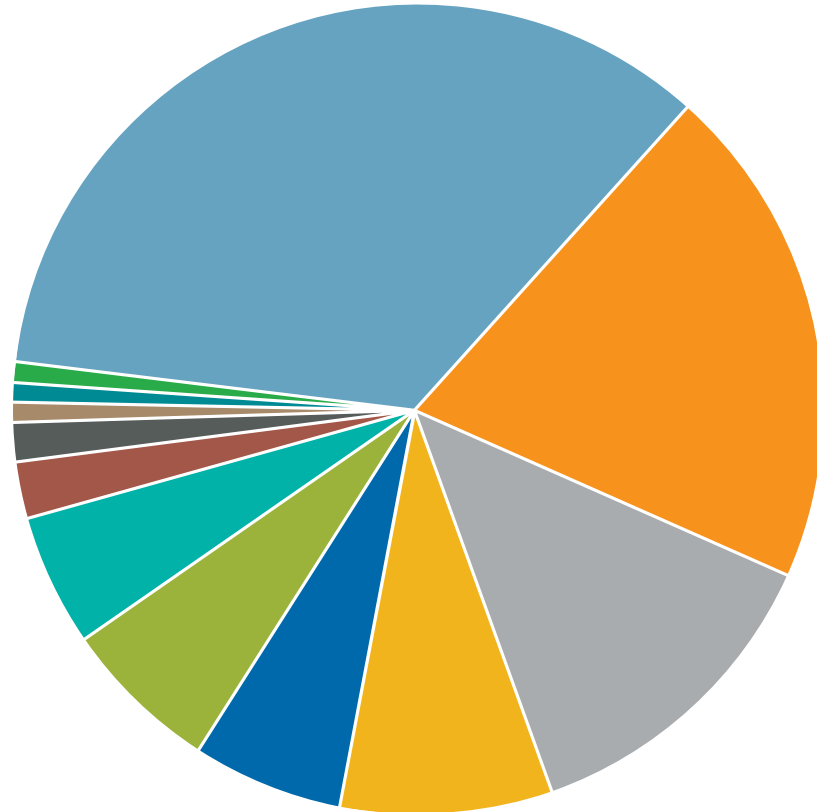
# A COMPARISON

## ACCESSIBLE PLAY ACCOMMODATES:

### STUDENTS WITH PHYSICAL DISABILITIES

The **1%**  
(Orthopedic  
Impairments)  
that falls into the  
ADA target

Source: National Center  
for Education Statistics, 2019.



## INCLUSIVE PLAY ACCOMMODATES:

- Specific learning disabilities
- Speech or language impairment
- Other health impairments
- Autism
- Developmental delay
- Intellectual disability
- Emotional disturbance
- Multiple disabilities
- Hearing impairment
- Orthopedic impairment
- Traumatic brain injury
- Visual impairment
- Deaf-blindness

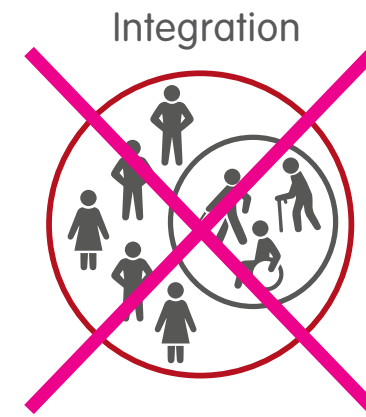
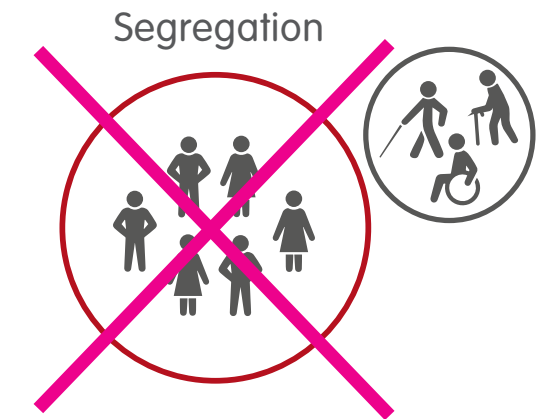
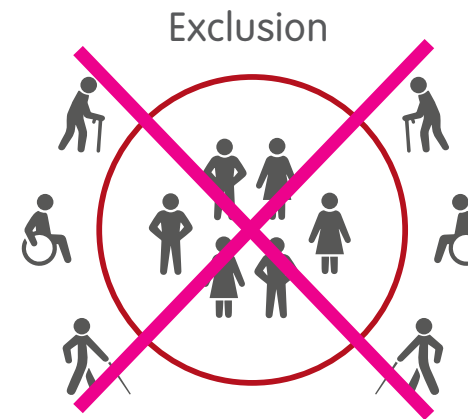
SOURCE: LANDSCAPE STRUCTURES





# DESIGN MISSION

*"MISSION: DESIGN PLAYGROUNDS THAT ARE NOT ONLY ACCESSIBLE, BUT TRULY **INCLUSIVE.**"*



SOURCE: LANDSCAPE STRUCTURES & KOMPAN

PASCACK BROOK COUNTY PARK, WESTWOOD, NJ



01.07.2025





# ACCESSIBILITY VS. INCLUSIVITY

WHAT IS AN **ACCESSIBLE** PLAYGROUND?

---

ONE THAT OFFERS A RANGE OF PLAY EXPERIENCES TO CHILDREN OF VARYING ABILITIES.

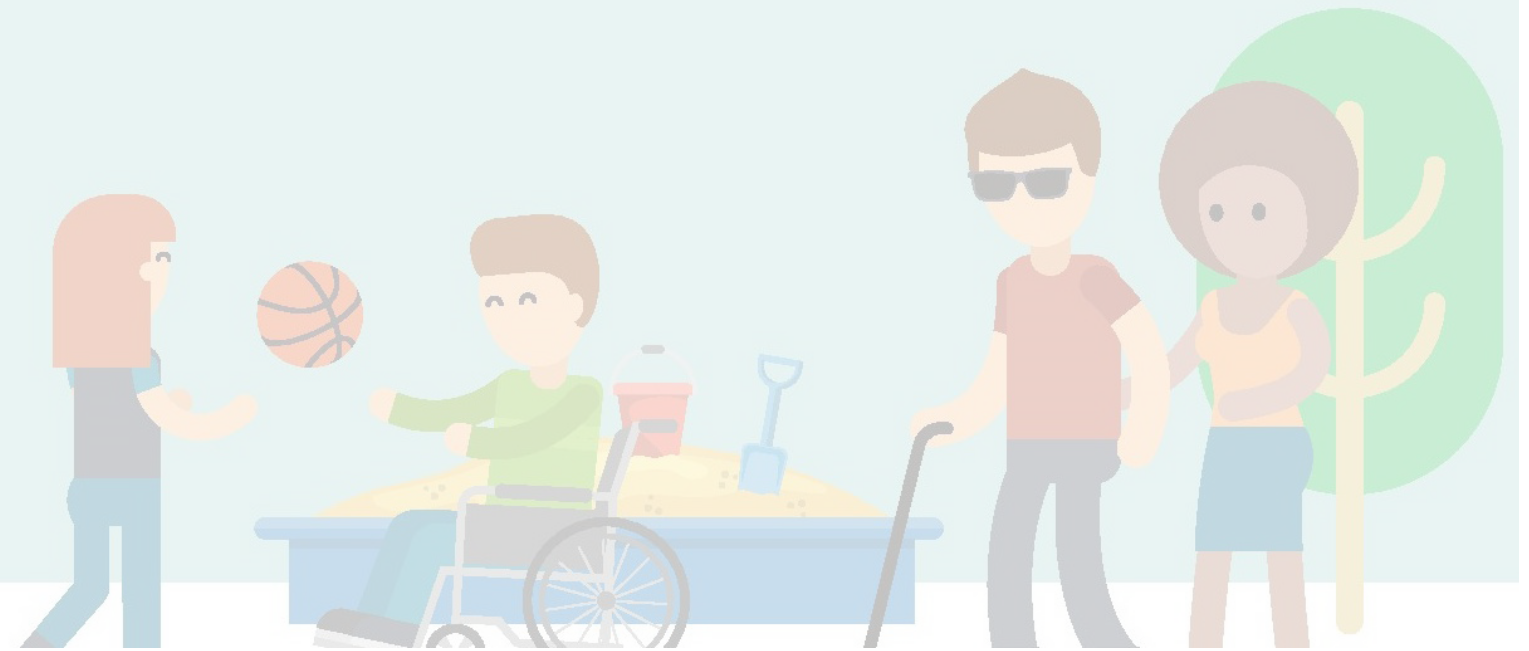


SOURCE: ADA & LANDSCAPE STRUCTURES

WHAT IS AN **INCLUSIVE** PLAYGROUND?

---

UNIVERSALLY DESIGNED, SENSORY-RICH ENVIRONMENT THAT ENABLES ALL CHILDREN TO DEVELOP PHYSICALLY, COGNITIVELY, SOCIALLY AND EMOTIONALLY, REGARDLESS OF DIFFERENCES IN THEIR ABILITIES.





# DESIGN GUIDELINES FOR ACCESSIBLE PLAY

1. PROVIDE AN ACCESSIBLE ROUTE
2. PROVIDE ACCESSIBLE GROUND SURFACES
3. PROVIDE RAMPS OR TRANSFER PLATFORMS TO ELEVATED PLAY COMPONENTS
4. PROVIDE VARIED PLAY COMPONENTS ALONG AN ACCESSIBLE ROUTE
5. PROVIDE GROUND-LEVEL PLAY COMPONENTS
6. EVALUATE PLAY AREA DESIGN FOR ACCESSIBILITY

SOURCE: U.S. ACCESS BOARD





# DESIGN GUIDELINES FOR **INCLUSIVE** PLAY

1. **BE FAIR - EQUITABLE USE**
2. **BE INCLUDED - FLEXIBILITY IN USE**
3. **BE INDEPENDENT - PERCEPTIBLE INFORMATION**
4. **BE SMART - SIMPLE AND INTUITIVE USE**
5. **BE SAFE - TOLERANCE FOR ERROR**
6. **BE ACTIVE - LOW PHYSICAL EFFORT**
7. **BE COMFORTABLE - SIZE AND SPACE FOR APPROACH AND USE**

SOURCE: CENTER FOR UNIVERSAL DESIGN AT NORTH CAROLINA STATE UNIVERSITY





## INCLUSIVE PLAY ELEMENTS ADDRESS:

### SOCIAL / EMOTIONAL CHALLENGES

COOPERATION, DRAMATIC + IMAGINATIVE PLAY

### PHYSICAL CHALLENGES

GROSS MOTOR / FINE MOTOR SKILLS, FLEXIBILITY, ACCESSIBILITY, HEALTH RISK

### SENSORY CHALLENGES

TACTILE, VISUAL, AUDITORY, SMELL, VESTIBULAR, PROPRIOCEPTIVE, INTROCEPTIVE

### COGNITIVE CHALLENGES

CREATIVITY, SENSE OF ACCOMPLISHMENT, PROBLEM-SOLVING, RISK ASSESSMENT

### COMMUNICATION CHALLENGES

DEVELOPMENT OF RECEPTIVE + EXPRESSIVE LANGUAGE

### ACCESS / SAFETY / COMFORT

SOURCE: PLAYCORE





PHYSICAL + SENSORY + COGNITIVE



Marble Panel® and Optigear Panel®

Sensory Play Center®



10 playlsi.com/inclusive-play • 888.438.6574 • 763.972.5200

SENSORY + SOCIAL



Cascata® Bells



Grandioso® Chimes

Inclusive Play 13

COMFORT + SOCIAL + PHYSICAL



Smart Play® Market Cafe



We-saw™



Sway Fun® Glider



Cozy Dome®

14 playlsi.com/inclusive-play • 888.438.6574 • 763.972.5200

SOURCE: LANDSCAPE STRUCTURES

PASCACK BROOK COUNTY PARK, WESTWOOD, NJ



01.07.2025





SOCIAL + PHYSICAL + SENSORY



We-Go-Round



OmniSpin Spinner



Chill Spinner

SOCIAL + PHYSICAL + SENSORY



Friendship Swing



ZipKrooz Assisted



Oodle Swing

Inclusive Play 9

SOCIAL + PHYSICAL + SENSORY



Rollerslide



Roller Table™

12 playlsi.com/inclusive-play • 888.438.6574 • 763.972.5200

SOURCE: LANDSCAPE STRUCTURES

PASCACK BROOK COUNTY PARK, WESTWOOD, NJ



01.07.2025





# INCLUSIVE PLAY PRECEDENTS

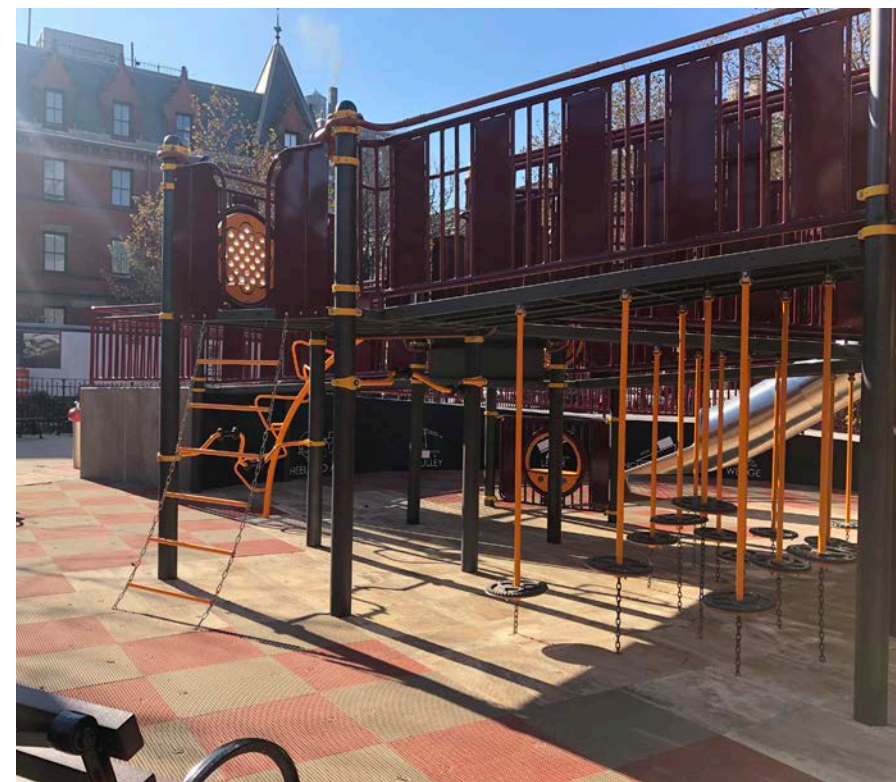


01.07.2025





# BLOOMINGDALE PLAYGROUND (RAMP STRUCTURE PLAY)



NEW YORK, NY  
YEAR BUILT: 2019  
SIZE: APPROX. 6,000 S.F.  
INCLUSIVE PLAY ELEMENTS:

ACCESS / SAFETY / COMFORT

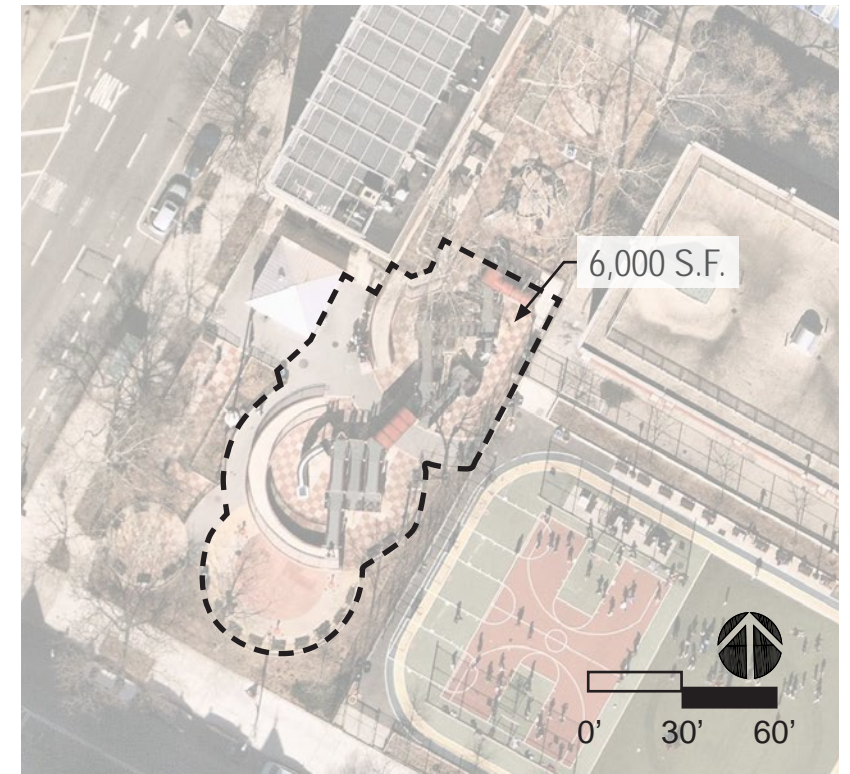
SOCIAL / EMOTIONAL

PHYSICAL

SENSORY

COGNITIVE

COMMUNICATION



SOURCE: MKW + ASSOCIATES, LLC

SITE AERIAL

PASCACK BROOK COUNTY PARK, WESTWOOD, NJ



01.07.2025





# BLOOMINGDALE PLAYGROUND - INCLUSIVE PLAY ELEMENTS

SLIDE  
SENSORY+PHYSICAL

PLAY STRUCTURE  
PHYSICAL+SENSORY+COGNITIVE

SHADE  
COMFORT+  
SENSORY

BOLLARD ACTIVATED SPLASH  
PAD SENSORY+COGNITIVE+  
COMMUNICATION

SENSORY PANELS  
SENSORY+COGNITIVE

IMAGINATION STALL  
SENSORY+COGNITIVE

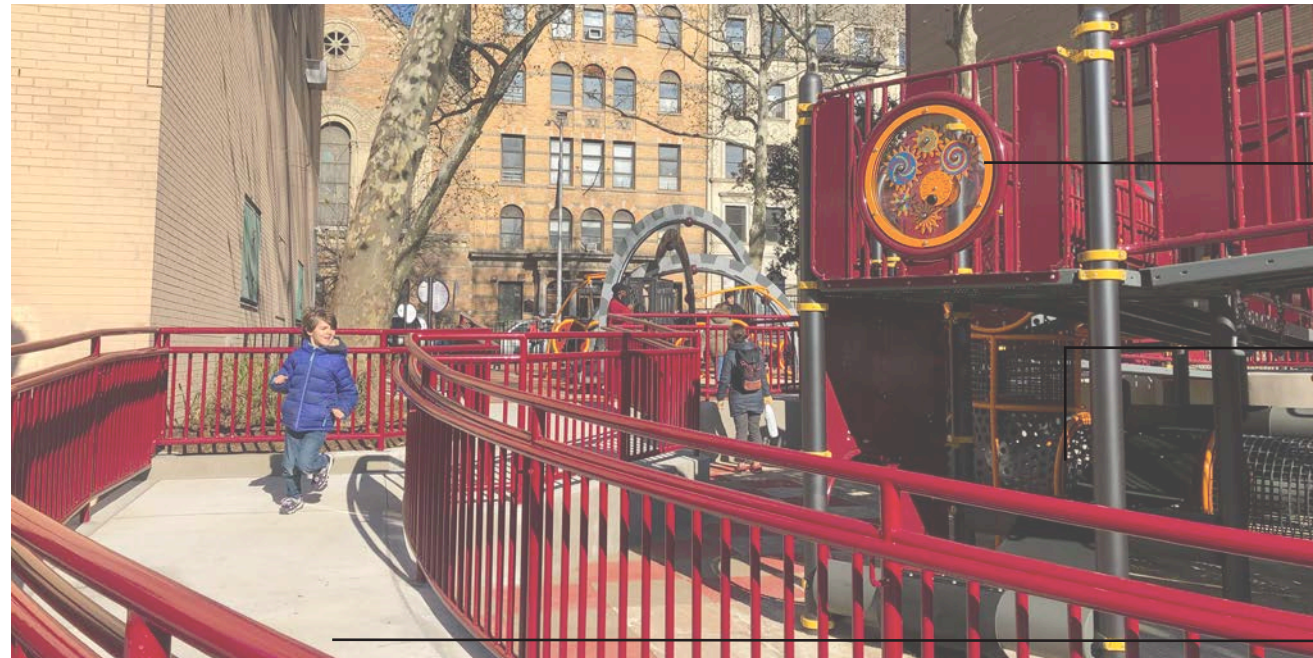
SWIGGLE STIX  
PHYSICAL+SENSORY+  
COGNITIVE



ART  
SENSORY+EMOTIONAL

GLIDER  
ACCESS+SOCIAL+  
SENSORY+PHYSICAL

SAFETY SURFACE  
ACCESS+SAFETY+SENSORY



SENSORY PANELS  
SENSORY+COGNITIVE

CRAWL TUNNELS  
SENSORY+PHYSICAL

RAMP  
ACCESS+EMOTIONAL+  
SENSORY

SOURCE: MKW + ASSOCIATES, LLC

PASCACK BROOK COUNTY PARK, WESTWOOD, NJ



01.07.2025





# ANDERSON PLAYGROUND (NATURE PLAY)



LOCATION: PITTSBURGH, PA  
 YEAR BUILT: 2024  
 SIZE: APPROX. 5,200 S.F.  
 INCLUSIVE PLAY ELEMENTS:

- ACCESS / SAFETY / COMFORT
- SOCIAL / EMOTIONAL
- PHYSICAL
- SENSORY
- COGNITIVE



SOURCE: KOMPAN

SITE AERIAL





# ANDERSON PLAYGROUND - INCLUSIVE PLAY ELEMENTS



SOURCE: KOMPAN

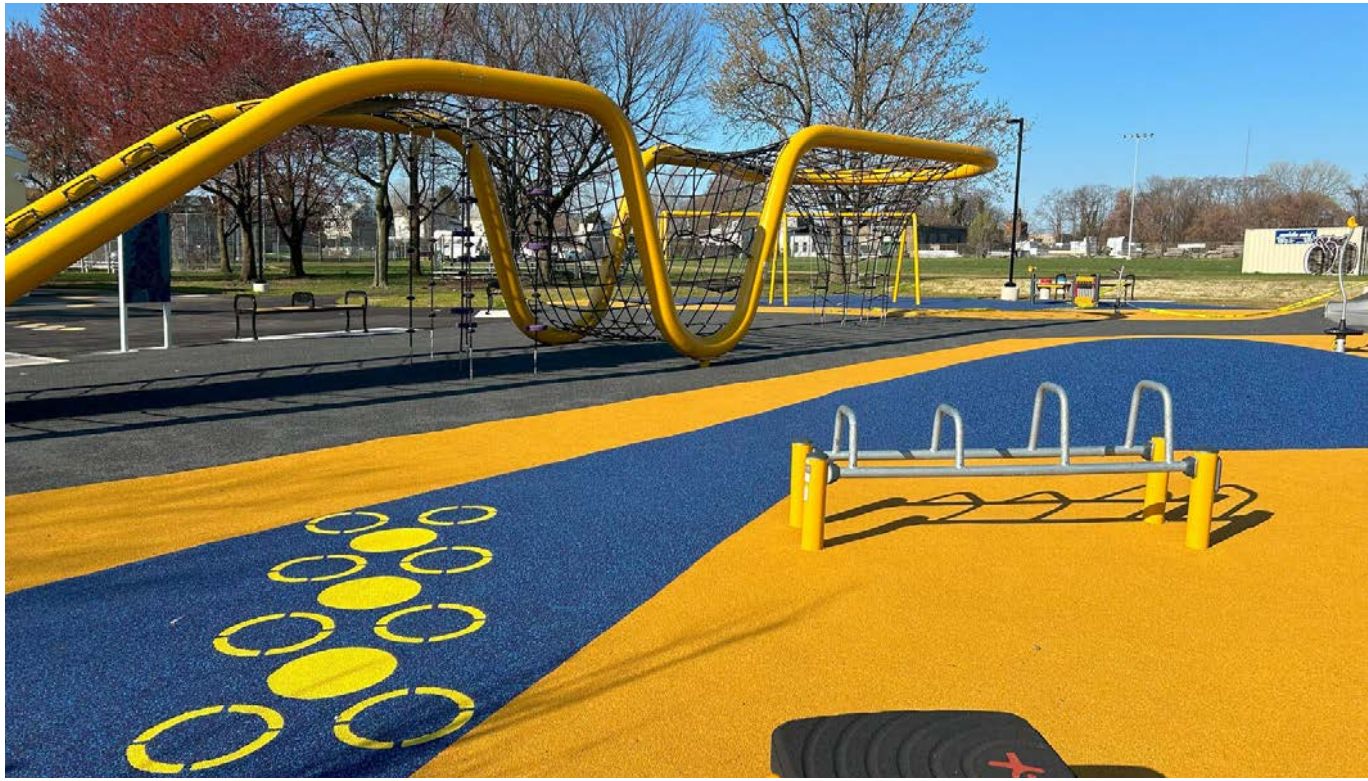


# ZIEHLER PLAYGROUND (INNOVATIVE PLAY)



LOCATION: PHILADELPHIA, PA  
 YEAR BUILT: APRIL 2024  
 SIZE: APPROX. 6,700 S.F.  
 INCLUSIVE PLAY ELEMENTS:

- ACCESS / SAFETY / COMFORT
- SOCIAL/ EMOTIONAL
- PHYSICAL
- SENSORY
- COGNITIVE
- COMMUNICATION



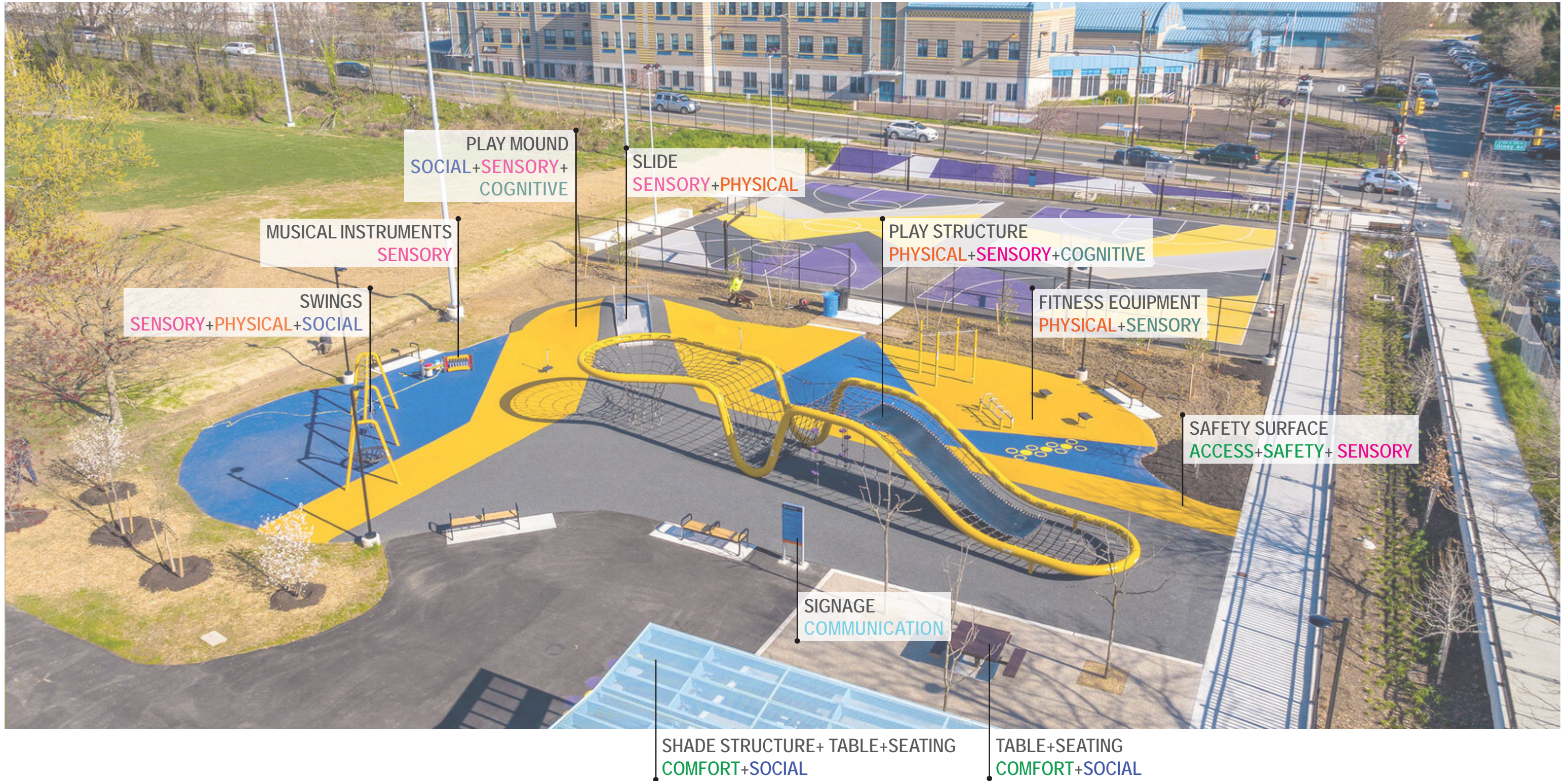
SOURCE: KOMPAN

SITE AERIAL





# ZIEHLER PLAYGROUND - INCLUSIVE PLAY ELEMENTS



SOURCE: KOMPAN

PASCACK BROOK COUNTY PARK, WESTWOOD, NJ



01.07.2025

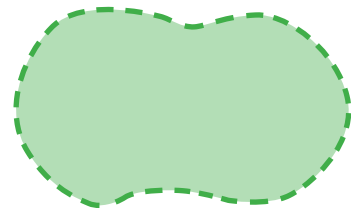




# PLAYGROUND COMPARISONS



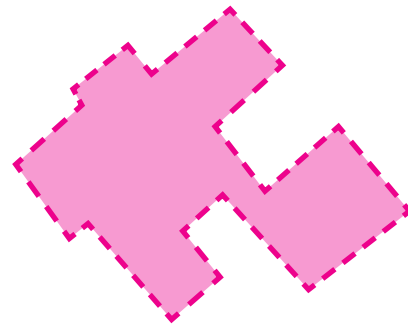
NATURE PLAY



ANDERSON PLAYGROUND  
5,200 SF



?



PASCACK BROOK COUNTY PARK  
5,300 SF



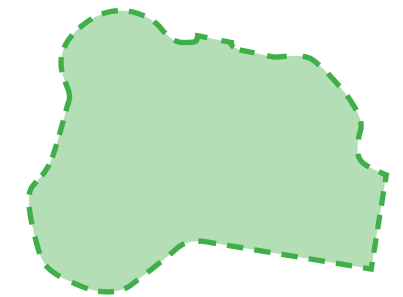
RAMP PLAY



BLOOMINGDALE PLAYGROUND  
6,000 SF



INNOVATIVE PLAY



ZIEHLER PLAYGROUND  
6,700 SF



# SAFETY SURFACING TYPES



POURED-IN-PLACE SAFETY SURFACE



ENGINEERED WOOD FIBER MULCH SAFETY SURFACE



# COMMUNITY SURVEY FEEDBACK THUS FAR

## MOST DESIRED AMENITIES

---

- WHEELCHAIR-ACCESSIBLE
- FENCING
- SHADED AREAS
- QUIET PLAY
- SENSORY, COGNITIVE, IMAGINATIVE, AND COMMUNICATION PLAY
- SEATING
- SAFE AND COMFORTABLE



**THANK YOU!**  
**QUESTION & ANSWER PERIOD**

